

VW Camshaft CAM672 & CAM914 – Fitting Instructions

In order to ensure a long service life of AE® replacement camshafts, CAM672 & CAM914, it is vital and essential that the following fitting instructions are followed. Failure to comply with these instructions may result in premature wear or failure of the replacement parts.

Removal

1. Drain the old engine oil, remove the sump and clean the oil strainer.
2. Refer to the engine manufacturers recommended sequence for the removal of all bolts when removing the old camshaft. Following the recommended sequence will minimize any chance of distortion.
3. Remove the old camshaft and bearing shells.
4. Remove the old hydraulic lifters.
5. Ensure all oil galleries are THOROUGHLY flushed to remove any remaining engine oil or debris.

Installation of camshaft

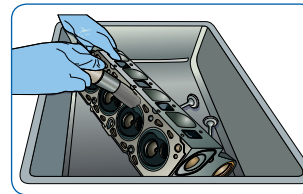
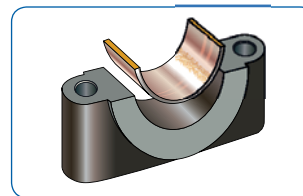
1. Ensure the crankshaft sprocket has been secured at Top Dead Centre (TDC), before installing the new camshaft.
2. Wipe clean the bearing shell housing and carefully fit new bearing shells.
3. Prior to fitting new hydraulic lifters slightly depress the plunger to allow a degree of movement when installing the camshaft.
4. Install the camshaft in TDC position with the cam lobes of cylinder 1 pointing upwards.
5. Install bearing caps 2 and 4 and secure with NEW bolts. Tighten bolts sequentially to 8Nm +90°.
6. Install bearing caps 1, 3 and 5 and secure with NEW bolts. Tighten bolts sequentially to 8Nm +90°.

Installation of rocker arm shaft

1. THOROUGHLY inspect the roller-type rocker arm for any signs of wear on the roller surface. Should any signs of wear be in evidence the rocker arms MUST be replaced.
2. Install the rocker arm shafts and secure with NEW bolts. Tighten the bolts sequentially in stages to 20Nm +90°.
3. Adjust the unit injectors according to the engine manufacturer's recommendations.

Special instructions

- Clean or if necessary replace the oil cooler.
- Renew air and oil filters.
- Use correct grade of engine oil as recommended by the engine manufacturer.
- It is vital to allow the hydraulic tappets to settle after the camshaft is installed, therefore please wait a minimum of 30 minutes before carefully turning the crankshaft 2 full rotations manually to ensure no valve to piston contact occurs.
- Upon initial start-up allow the engine to idle at no more than 1500rpm until the hydraulic lifters are fully primed.



Federal-Mogul Global Aftermarket EMEA bvba
Prins Boudewijnlaan 5 • B-2550 Kontich • Belgium